



Steve Dilworth
RECENT WORK

www.stevedilworth.com
e: mail@stedilworth.com
t: +44 (0)1859 530217



Venus Stone

Goodwood Sculpture Park
2008

I remember being shown a massive boulder on Harris that was resting over another allowing a narrow gap underneath. Some sort of game or ritual would be played where people would be pulled through and under this rock. This seemed to me to echo earlier and more archaic rituals of rebirth, the need for the physical to connect us to the mysteries.

Venus Stone, has its roots in this memory. It also draws on the most famous Venus of Willendorf, a beautiful sculpture that still speaks to us even if its message is quite different and the original intention quite lost. This new work could also be seen as a sister to 'Claw' countering its aggressive masculinity for a confident sensuality, balanced and weightless before us. All of this is to describe and inform but not to express the sheer physicality and scale of over twenty tons of a polished black granite megalith reflecting and losing itself in the sky.



Claw

Goodwood Sculpture Park
2007

It is made in Black Granite, 2.2m high,
highly polished and weighs
approximately nine tons.



Carapace

Bronze
2008
Trost Collection





Ark
2000

Commissioned by Sculpture at Goodwood, this bronze and silver-nickel carapace, approximately two metres long, encloses and supports a fractured egg which in turn protects and contains a bronze and silver-nickel sculpture which encloses a hooded crow. It is a vessel that will travel through time, an elaborate jewel to protect the despised. It is now part of the permanent collection for the new King's Place Arts Centre at Kings Cross, London.





The Cat and the Rat 2007

This is a unique sculpture. The cat, a present from a museum in Vienna, is over a hundred years old and died as a result of eating too many rats that had been poisoned with arsenic, a natural preservative. Both desiccated bodies were burned out, as in the lost wax process. Now frozen forever in a dance of death on a white bronze moon.



Case

Aberdeen University
2007

This work is cast in bronze. It is approximately two and a quarter metres long. It is installed at Kings College, Aberdeen.





Porpoise
2004/5

Taken from a porpoise I found washed up, the vertebrae were individually cast in solid sterling silver, The constructed carapace is in bronze and the tusk in sterling silver. All the casting was carried out by Pangolin Foundry and this sculpture was one of three selected for the Royal Academy Summer Exhibition 2006.

Evolution 1
2006

A simple form in bronze.





Evolution 2
2006

A more complex form in bronze,
slowly evolving.

Dailly Bridge

2003

This project was a collaboration with Charles Scott [Charles Scott and Partners, Glasgow] and Amsco Construction [Alexandria]. Commissioned by Dailly Village, Ayrshire, it was supported by the Royal Society of Architecture and the Scottish Arts Council. The superstructure is based on a fish vertebrae and built using bead blasted stainless steel.





Bowl
Glen Urquhart School
2004



This marble bowl [approximately one and a half metres long] contains beach pebbles, each inscribed with the name and date of birth of every pupil at this new school. It was proposed that with each new intake, the collection of pebbles would grow.



Herons

2003

"I can describe a moment a few years ago when returning from a creel fishing trip in late October, in an old wooded boat held together with fibreglass, nails and hope. Using a tender to shield the wind, fish already drying in the box - bait for tomorrow. The best time to eat Heron is on a full moon - they are fat and have been feeding all night. These broke their necks trying to take farmed fish out of a fish cage.



Dune
1996

This bronze contains sand taken from a sand dune and forms part of the Knox Collection, Suffolk.



Swan
1996

Surrounded in marble and bronze, the swan was found dead in a field, and sent to me via the local bus.



Mountain Air

2002

... Beneath and beyond the recorded jape is: process. Customised phials, rounded at both ends (with vestigial vacuum bulb burnt off), are heated by a portable gas canister. Hebridean air is trapped. The maquette that will contain it is made from polystyrene, wood, plaster. A bronze is cast and polished. A smooth helmet-shape with a lovely patina. There are apertures through which the radiant air can be examined. The bronze becomes a visor, a device that is both ancient and early contemporary. View according to choice: Sellafield or Sutton Hoo.



Cuckoo
1993

Also a cosh with it's arms folded,
in rosewood and brass. [Made for
an 'objects of love exhibition']



Cormorant
1993

The case is made from the prow of a fishing boat
and in it's life spent half it's time under the sea as
above. The cormorant within was much the same.



Woodcock
1993

Encased in flame rosewood and
flattened nails, this bird was a
present from the cat.



Ballast Stone
1993

Stones used to help a boat sail into the wind towards it's destination, then discarded on arrival. This one has a token female form carved in whale bone.



Gull
1997

An egg form, but also a creel belonging on the sea bed. The gull is said to contain the souls of drowned sailors.



North Wind
1992

Washed up and well rotting, some teeth were extracted from a sperm whale before the local health authority blew it up. During the carving, the wind blew from the north, and a token part was sealed in a glass phial and hidden within each tooth.



Wren
1993

If a wren flies into your chest then this is an omen of death. This throwing object can be cast into our internal landscape.



Hooded Crow/Twins
2005

Made in Harris stone, contains a hooded crow, the alabaster eggs each containing a small bird, the beak and claws in bronze.



Blackbird
2005

Carved in Harris stone, the beak made from a Hippopotamus' tusk.



Rocking Stone
2002

A simple stone and polished form that balances and simply exists. I can't explain them but I know they have a presence as yet I don't understand. This is why they are there and I continue to make them. A simplicity of form, and having the courage to keep it so.



Cup Stone
2004

In response to ancient carvings whose function remains uncertain.



Slashed stones
2005

Soapstone



Featherweight
1995

Contains a feather found next to the stone on the shore.



Lure
2005

Alabaster & rivets, the form based on a hawking lure & venus stone.



Barb
2005

Carved from Harris Stone



Cup Stone
2004

In response to ancient carvings whose function remains uncertain.



Owlfish
2004

An owl inside a stone which somehow became a fish.



Bird
2005

Carved in soapstone, contains a small bird.



Heart of the Thief
1998

On returning from surfing [on the island of Tobago] I discovered that a petty thief had been through my bag and stolen a few dollars. An outline of the thief was drawn on the sand over the place of the theft and a fistful taken from where his heart should have been. The sand is inside a heart shaped form made out of more money than was originally stolen, and in turn surrounded by a thicket of nails. A few grains were released for a way through for redemption.



Guillemot
2004

Timber from local boatyard, rope, part of a longline,
bird from the shoreline



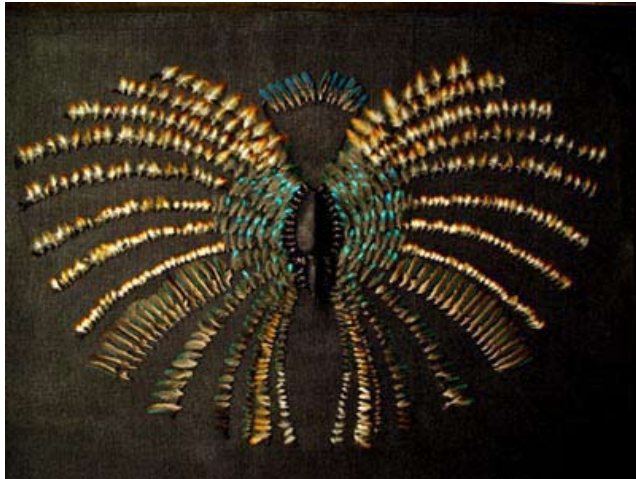
Studded Stone
2005

Harris stone & rivets



Kingfisher
2003

About six to seven hundred flies were tied, each with a feather, and laid out in anatomical order. The remaining carcass was preserved and bound with fishing line in the centre.



Xray Seascape
1991

Made for the local hospital in Stornoway, it lasted 24 hours and was then removed by the authorities for fear of offending the patients. Alas, during the moving it was damaged beyond repair.



Throwing object
2005

Contains a small bird [found on beach in Tobago] interred in lignum vitae, leather and studs.

